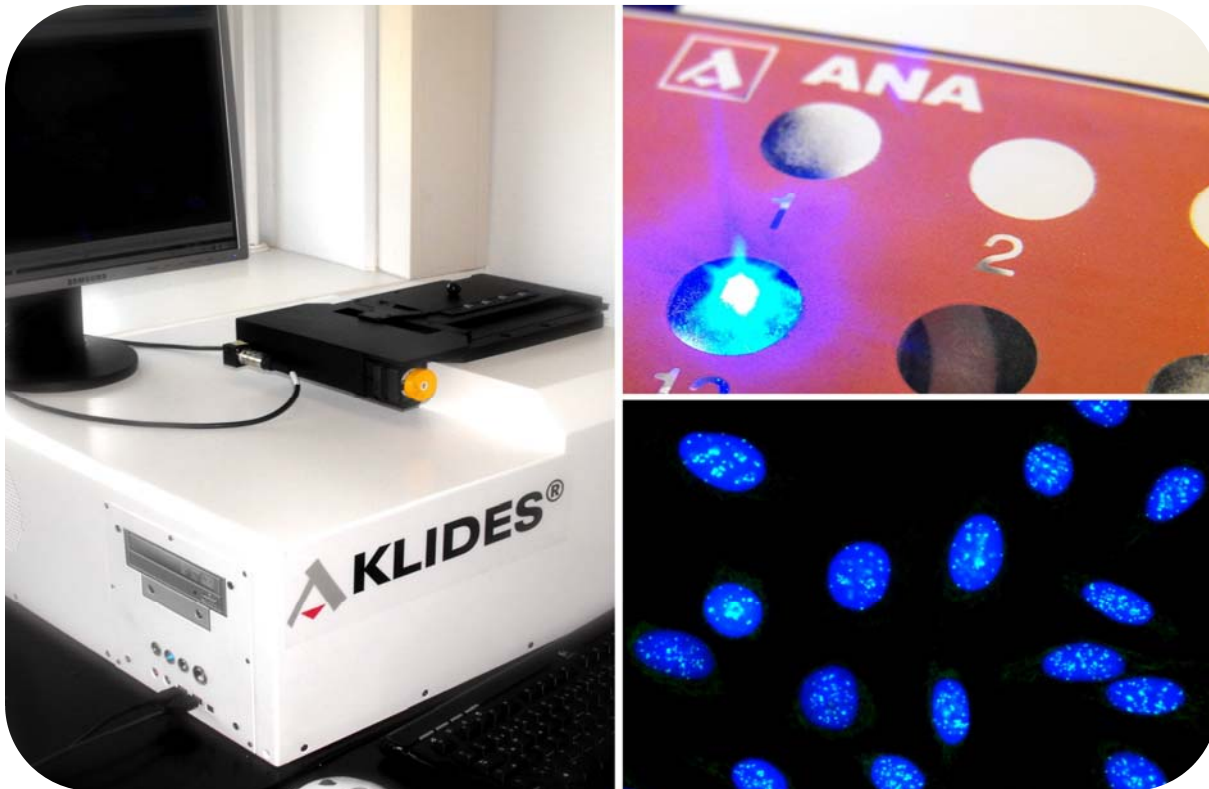
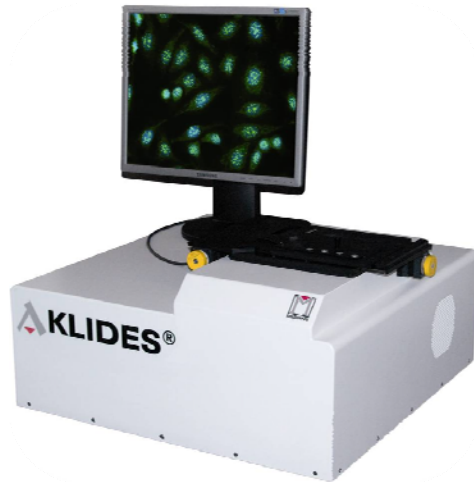


## Automatic evaluation of cell based immunofluorescence tests



### AKLIDES<sup>®</sup> offers:

- Fully automated screening and evaluation of cells
- Analysis in < 1 minute per well
- Pattern specific quantification
- Archiving of results and database
- Sample-specific report in pdf. and csv. format
- Intelligent live image mode
- LIMS compatible



## Technical Data:

Length: 65 cm

Width: 67 cm

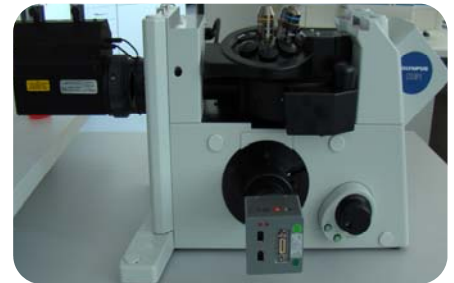
Height: 32 cm

Total weight: 76.6 kg

- PC containing the AKLIDES<sup>®</sup> Software

## ► Fluorescence microscope

The fluorescence microscope unit itself, focussing (z axis), objective and filter changer are automatically controlled by AKLIDES<sup>®</sup>.



## ► Scan stage

The scan stage is fully controlled in x and y axis via AKLIDES<sup>®</sup>. It holds up to 4 slides.



## ► LED lightsource

The LED lightsource is equipped with two optical fibers. It provides light of defined excitation wavelength and a superior maintenance-free working time of more than 10.000 hours.

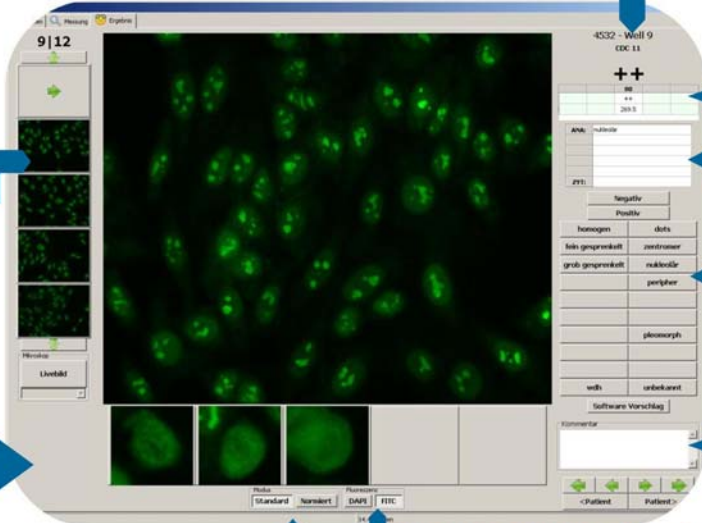


## ► Camera

The camera of the AKLIDES<sup>®</sup> system is a highly sensitive CCD, fully controlled via software.



The AKLIDES<sup>®</sup> software is the key component of the system. The software guarantees optimal image processing and fully automated analysis of immunofluorescence signals.



**Signal strength [AU]**

|            |   |            |
|------------|---|------------|
| < 70       | = | negative   |
| 70 - 100   | = | borderline |
| 100 - 200  | = | +          |
| 200 - 500  | = | ++         |
| 500 - 1000 | = | +++        |
| > 1000     | = | ++++       |

**Images taken at 40-fold magnification**

**Detailed view of cell cycles**

**Subsequent pattern selection**

**User comment field**

**Fluorescence channel to choose**

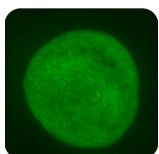
**Signal strength adjustment:**  
variable: pre-set signal strength in FITC  
defined: maximum signal strength in FITC

## Evaluation

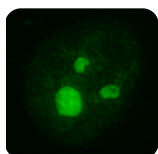
The AKLIDES<sup>®</sup> software automatically analyzes the intensity and structure of the fluorescence signal for each sample.

Positive-negative differentiation, a nuclear-cytosolic localisation and assignment of ANA fluorescence for five basic patterns are provided:

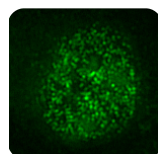
Therefore, it is possible to standardize indirect immunofluorescence for the first time.



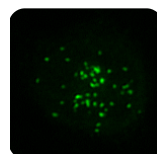
homogeneous



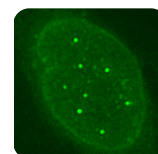
nucleolar



speckled



centromere



dots

## Image storage

AKLIDES<sup>®</sup> automatically stores the fluorescence images and defined pattern of each sample. This allows digital archiving and database search of results in an internal database protecting the concluding results over years.

## Export options

Images and reports can be sent via e-mail in pdf. and csv. format.

## Product overview

|                 | Product  | Size       | Order-Code   | Substrate                              | AKLIDES KYTO offers                          |
|-----------------|----------|------------|--------------|--|--|
| <b>AKLIDES®</b> |          |            |              |  |  |
| <b>CELLS</b>    | ANA plus | 480<br>120 | 4063<br>4065 | HEp-2 cells                            | Automatic evaluation and pattern recognition |
|                 | nDNA     | 100        | 4059         | Crithidia lucilliae                    | Automatic evaluation                         |
|                 | cANCA    | 60         | 4060         | Ethanol fixed granulocytes             | Automatic evaluation and pattern recognition |
|                 | pANCA    | 60         | 4072         | Formalin fixed granulocytes            | Automatic evaluation and pattern recognition |
| <b>TISSUE</b>   | AMA      | 48<br>96   | 4117<br>4118 | Rat kidney                             | Automatic documentation                      |
|                 | ASMA     | 48<br>96   | 4119<br>4120 | Rat stomach                            | Automatic documentation                      |
|                 | AAA      | 48<br>96   | 4156<br>4157 | Monkey adrenal gland                   | Automatic documentation                      |
|                 | ASA      | 48<br>96   | 4125<br>4126 | Monkey esophagus                       | Automatic documentation                      |
|                 | EmA      | 48<br>96   | 4131<br>4132 | Monkey esophagus                       | Automatic documentation                      |
|                 | ICA      | 48<br>96   | 4129<br>4130 | Monkey pancreas                        | Automatic documentation                      |
|                 | SkMA     | 48<br>96   | 4135<br>4136 | Monkey skeletal muscle                 | Automatic documentation                      |
|                 | CMA      | 48<br>96   | 4133<br>4134 | Monkey heart muscle                    | Automatic documentation                      |
|                 | ATA      | 48<br>96   | 4127<br>4128 | Monkey thyroid                         | Automatic documentation                      |
|                 | Triple   | 48<br>96   | 4121<br>4122 | Rat liver<br>Rat stomach<br>Rat kidney | Automatic documentation                      |
|                 | Anti-GBM | 48<br>96   | 4123<br>4124 | Monkey kidney                          | Automatic documentation                      |

### MEDIPAN GMBH

Ludwig-Erhard-Ring 3 - 15827 Dahlewitz/Berlin

Phone: +49 (0) 33708 - 4417 - 0

Fax: +49 (0) 33708 - 4417 - 25

info@medipan.de

www.medipan.eu